

# Frameset sign-off

<b>Name and Serial Number</b>		Darren Baum - J344
<b>As per BikeCAD drawing</b>		BikeCAD, Darren Baum, J344, v1.0 MC
<b>Model</b>	<i>Type</i>	Bike
	<i>Name</i>	Orbis
<b>Fork Model</b>		Enve RD - 50mm TA
<b>Frame Design</b>	<i>Headset</i>	Semi-Integrated 1 1/8" top, integrated 1 1/4" bottom
	<i>Bottom Bracket</i>	T47 68mm
	<i>Seat Post</i>	31.6mm post
	<i>Spacers above stem</i>	5
	<i>Spacers below stem</i>	5
<b>Tubeset</b>	<i>Seat tube</i>	34.9mm
	<i>Down tube</i>	44.0mm
	<i>Top tube</i>	38.1mm
	<i>Chainstay</i>	25.4mm
	<i>Seatstay</i>	15.875
<b>Brakes and gears</b>	<i>Brakes</i>	Disc - direct mount
	<i>Gear System</i>	Road Standard (Double)
	<i>As per Cable Routing Drawing</i>	Di2B
	<i>Cable routing note</i>	-
	<i>Front brake lever pref (L or R)</i>	-
<b>Wheel and dropout spec</b>	<i>Wheel size</i>	700c
	<i>Max measured tyre size to be used</i>	34 measured
	<i>Axle Spacing</i>	142 x12 TA
	<i>Dropout type</i>	Hooded Titanium TA
<b>Options</b>	<i>Bottle bosses</i>	Down tube and seat tube
	<i>S&amp;S Couplings</i>	-
	<i>Rack Mounts (front)</i>	-
	<i>Rack Type (front)</i>	-
	<i>Rack Mounts (rear)</i>	-
	<i>Rack Type (rear)</i>	-
	<i>Mud guard eyes</i>	-
	<i>Other options</i>	-
	<i>Options Notes</i>	-

I confirm that I would like this frame and fork built with the options listed above

**Baum Customer Name** .....

# Parts sign-off

Name and serial no.

Darren Baum - J344

Model

Orbis

**Description**

**Colour**

**Supplied By**

- Fork
- Headset
- Headset Spacers

Enve RD - 50mm TA  
Cane Creek ZS44-IS47  
Carbon 1 1/8"

Baum Painted  
Black  
Carbon UD

Baum supply  
Baum supply  
Baum supply

**Groupset**

- Rear derailleur
- Front derailleur
- Crankset
- PCD*
- Crank length*
- Chainring supplier*
- Chainring sizes*

Dura-Ace R9200 Di2  
Dura-Ace R9200 Di2  
Dura-Ace  
Road Std  
175  
OEM

OEM  
OEM  
OEM  
  
OEM

Baum supply  
Baum supply  
Baum supply  
  
Baum supply

- Bottom Bracket
- Brakes
- Brake discs
- Integrated shift/brake levers
- Brake levers - separate
- Gear shifters - separate
- Chain
- Cassette
- Ratios*

Chris King T47  
Dura-Ace  
MT900 C/Loc 140mm  
Dura Ace Di2 Hydraulic  
-  
-  
M9100 12spd chain  
Dura-Ace  
Shimano 11-30

OEM  
OEM  
OEM  
OEM  
-  
-  
OEM  
OEM

Baum supply  
Baum supply  
Baum supply  
Baum supply  
-  
-  
Baum supply  
Baum supply

**Cockpit**

- Stem
- Handlebar
- Handlebar width*
- Handlebar ends
- Bar tape/ grips
- Saddle
- Seatpost

Enve, 110mm - 31.8, 6 deg  
Enve compact  
42cm C-C  
44cm C-C  
Shimano Race Comfort  
Pro Stealth Carbon Curved 142  
Enve 5mm offset

Baum Painted  
Original finish  
  
Original finish  
Black  
OEM  
Baum Painted

Baum supply  
Baum supply  
  
Baum supply  
Baum supply  
Baum supply  
Baum supply

**Wheels**

- Wheels
- QRs
- Tyres
- Tubes
- Valve Extensions
- Rim tape

Shimano Dura Ace C50 R9200  
Syntace (Baum modified)  
Vittoria Corsa TL 28mm  
Tubeless - -  
OEM  
Shimano HG+

OEM  
OEM  
Tan  
  
Black

Baum supply  
Baum supply  
Baum supply  
Baum supply  
Baum supply  
Baum supply

**Finish Kit**

- Cages
- Pedals
- Other 1
- Other 2
- Other 3
- Other 4
- Other 5
- Other 6

Silca Ti x 2  
-

Baum Ti Finished

Baum supply

I confirm that I would like this frame and fork to suit/ship with the parts listed above

**Baum Customer Name** .....

# Paint and Finish

<b>Name and serial no.</b>	Darren Baum - J344
<b>Model</b>	Orbis
<b>Fork Model</b>	Enve RD - 50mm TA
<b>Parts</b>	
Headset	Cane Creek ZS44-IS47 Black
Stem	Baum Painted Enve 110mm - 31.8 6 deg Baum Painted
Seat post	Baum Painted Enve 5mm offset 31.6mm post
Handlebar	Enve compactBaum Painted

## Paint and Finish Details

Paint Scheme	Baum Racing
Headbadge	GT Headbadge
Frame, Fork, Stem and Post as per drawing (enter file name)	Paint, Darren Baum, J344, v1.0 MC
Name on Top Tube	-
Font	-
Stickers on hub	-
Additional	-
Handlebar	Baum Painted

Notes

-
---

---

*I confirm that I would like this frame and fork built with the paint and finish listed above*

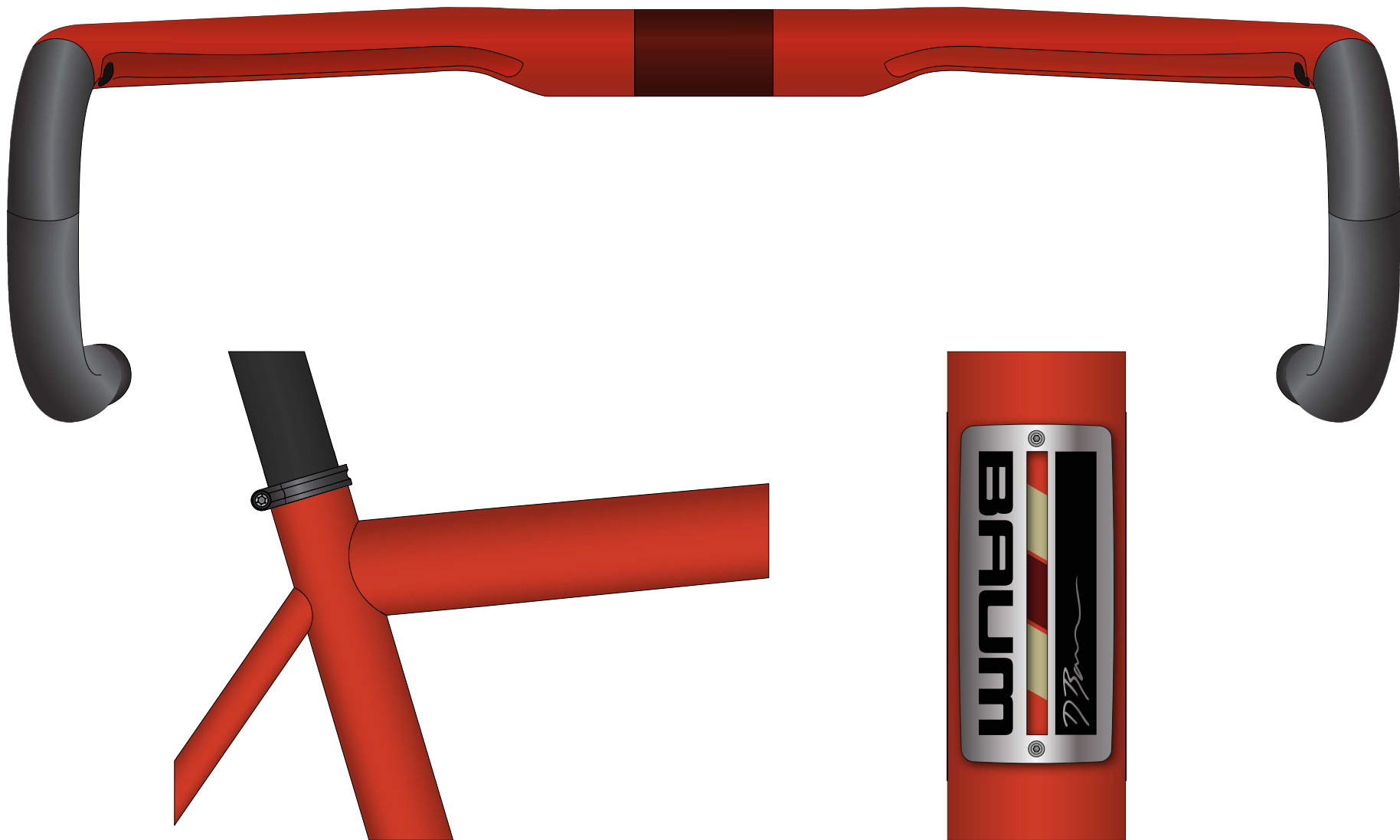
**Baum Customer Name** .....

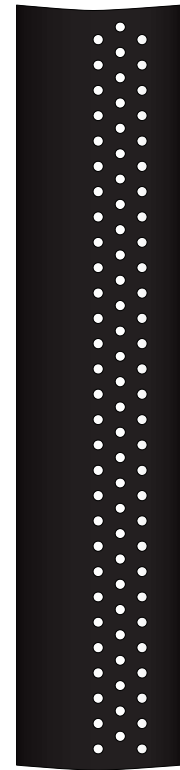
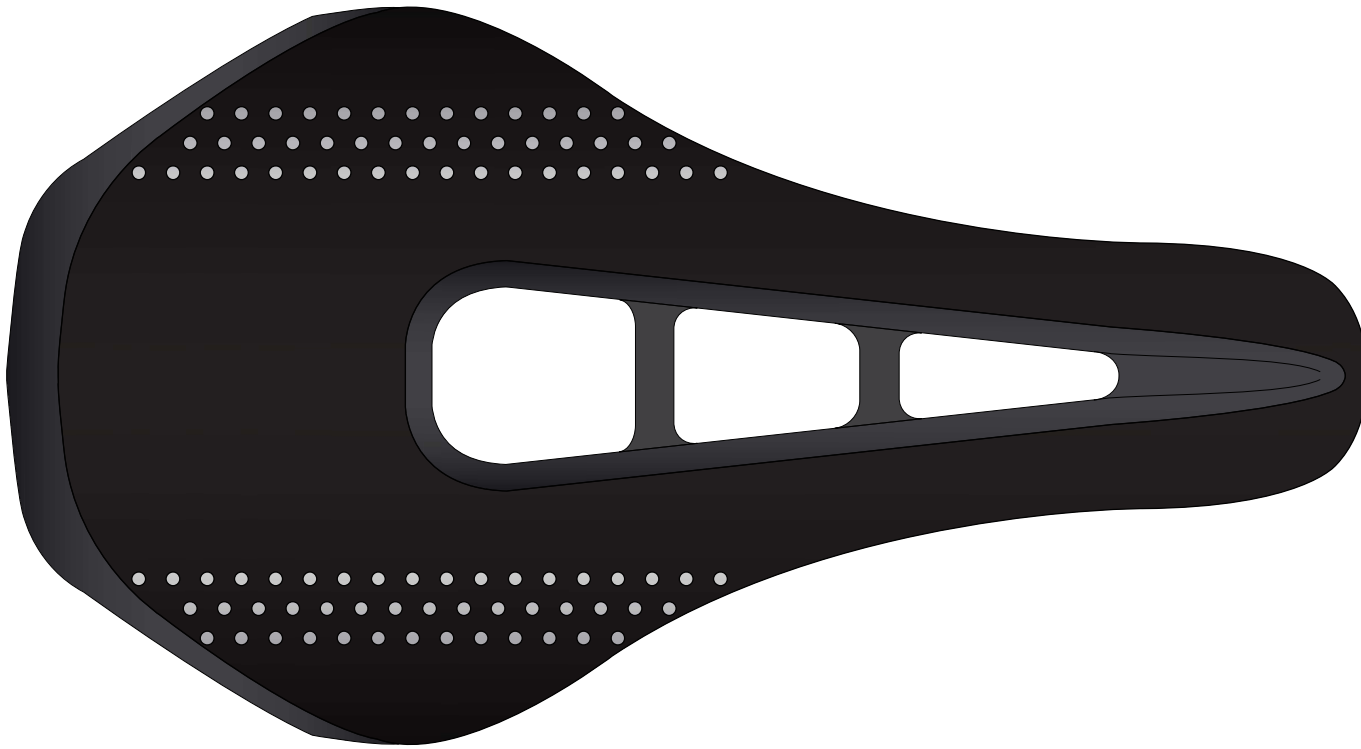
**BAUM**

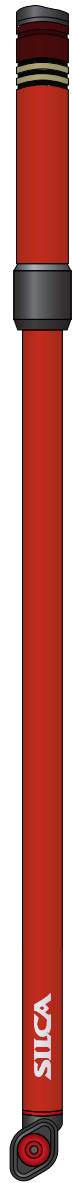
FINISHING  
BAUM RACING

Darren Baum  
03/09/2021  
Serial No J344 - v1.0JN







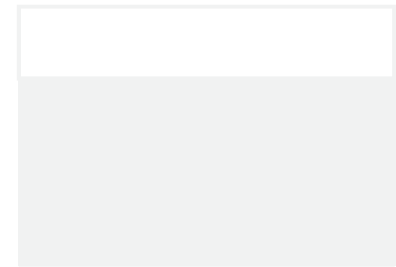
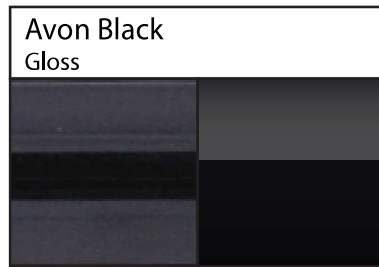
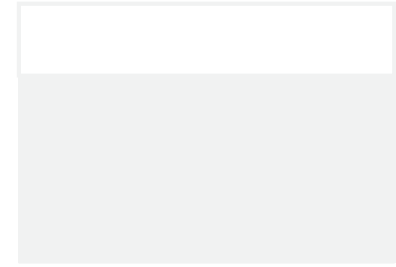
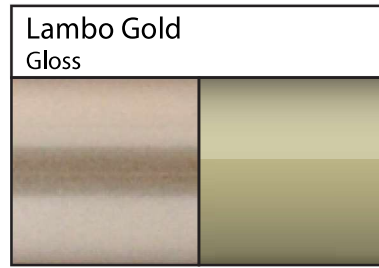
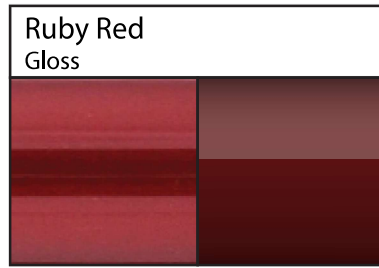
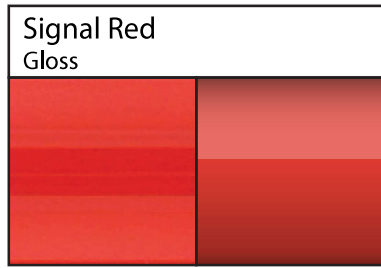


Impero Ultimate



Superpista Ultimate





### Upgrade Options:

- |   |  |
|---|--|
| <input checked="" type="checkbox"/> Head tube stripes | <input checked="" type="checkbox"/> Busyman leather tape     |
| <input type="checkbox"/> Name on top tube             | <input checked="" type="checkbox"/> Busyman covered saddle   |
| <input type="checkbox"/> Custom logos                 | <input checked="" type="checkbox"/> Silca track pump         |
| <input type="checkbox"/> _____                        | <input checked="" type="checkbox"/> Silca frame pump         |
| <input type="checkbox"/> _____                        | <input checked="" type="checkbox"/> Baum finished King cages |
| <input type="checkbox"/> _____                        | <input type="checkbox"/> _____                               |

### Notes: